

STEM
sports[®]

science • technology
engineering • math • sports

BASKETBALL

Module 1.1

Basketball Measurements

GRADES 6th – 8th



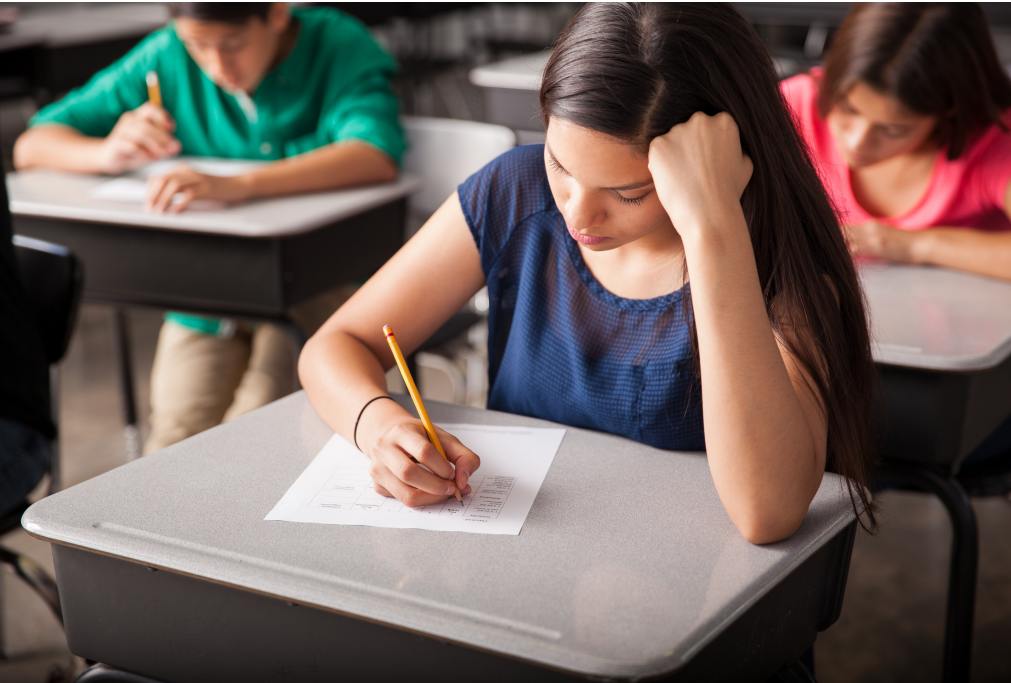
MODULE
1.1

GRADES
6-8

What Do You Need?

Supplies Provided
[Worksheets](#) and Tape
Measures

Materials Needed
Calculators, Pencils
and Plain Paper

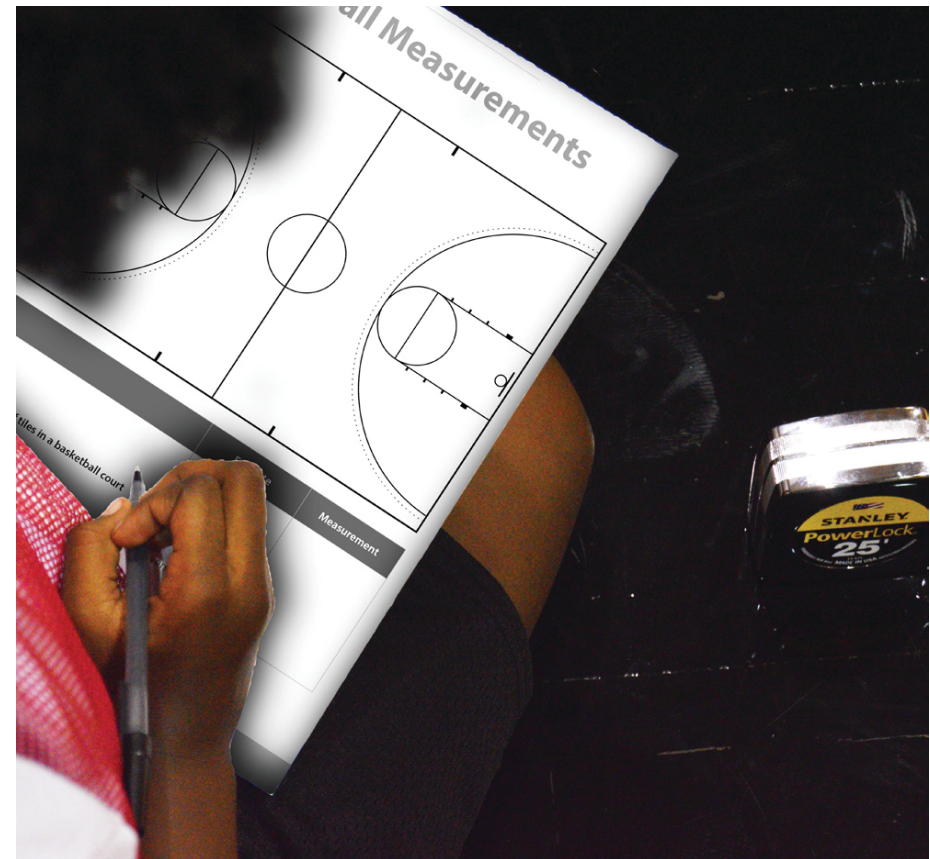


Test Your Knowledge

Have your students take this lesson's assessment prior to engaging by visiting: <https://stemsports.com/assessments/>. If you have limited digital capability, please email Info@STEMSports.com to access the Assessment & Key.

Engage

Why do court sizes vary at each level?



Explore

Measure and fill in the diagram of a basketball court. Use the [worksheet](#).

Explain

Coaches use proportional drawings called scaled models to create plays/strategize. How is a scaled model created based on the actual court size?

$$\frac{94 \text{ ft}}{50 \text{ ft}} = \frac{9.4 \text{ in}}{x}$$

Elaborate

Calculate important spots on the court using proportions. Use the [worksheet](#).



Evaluate

Create a scale model of the different lengths at each level. Do the court sizes change proportionally? Use the [worksheet](#).



What Did You Learn?

Have your students retake this lesson's assessment to effectively evaluate their comprehension by visiting:

<https://stemsports.com/assessments/>. If you have limited digital capability, please email Info@STEMSports.com to access the Assessment & Key.



Extend

Challenge Yourself!

There are circles on a basketball court. Find the diameter of these various scales.



What is your Dream Job?

STEM Jobs in Sports

- Basketball Analyst
- Director of Facilities and Operations
- Stadium/Arena Designer
- Building Engineer
- Basketball Court Manufacturer

Want to continue the education?
Visit us at <https://stemsports.com/>
OR
Tag us @stemsportsusa



STEMSportsUSA



@STEMSportsUSA



STEMSportsUSA



STEMSportsUSA/pins



@STEMSportsUSA



STEM Sports

