

STEM
sports[®]

science • technology
engineering • math • sports

Multi - Sport Ball Edition
Module 2.0

The Field of Play

GRADES 6th – 8th

MODULE

2.0

GRADES
6-8

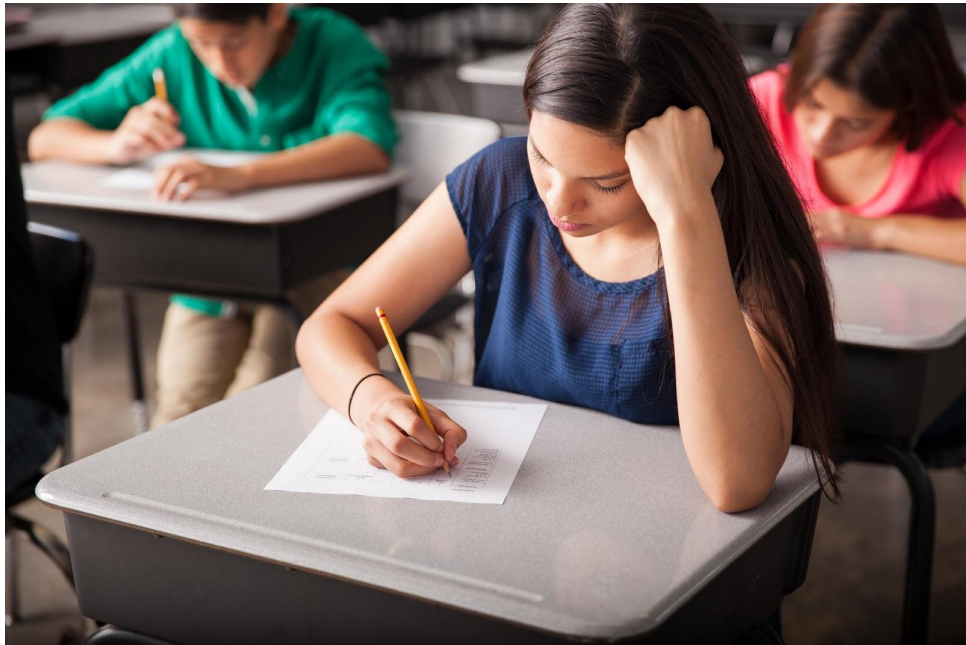
What Do You Need?

Supplies Provided

Worksheets and Baseballs (*Extend Only*)

Materials Needed

Pencils and Space to Throw (*Extend Only*)



Test Your Knowledge

Have your students take this lesson's assessment prior to engaging by visiting:

<https://stemsports.com/assessments/>

If you have limited digital capability, please email Info@STEMSports.com to access the Assessment & Key.



Fun Fact

Baseball fans eat enough hotdogs each year to stretch from Dodger Stadium (Los Angeles) to Wrigley Field (Chicago), which is over 25.5 million hotdogs and 5.5 million sausages, a length of approximately 2,015 miles.

Engage

What is your favorite position?

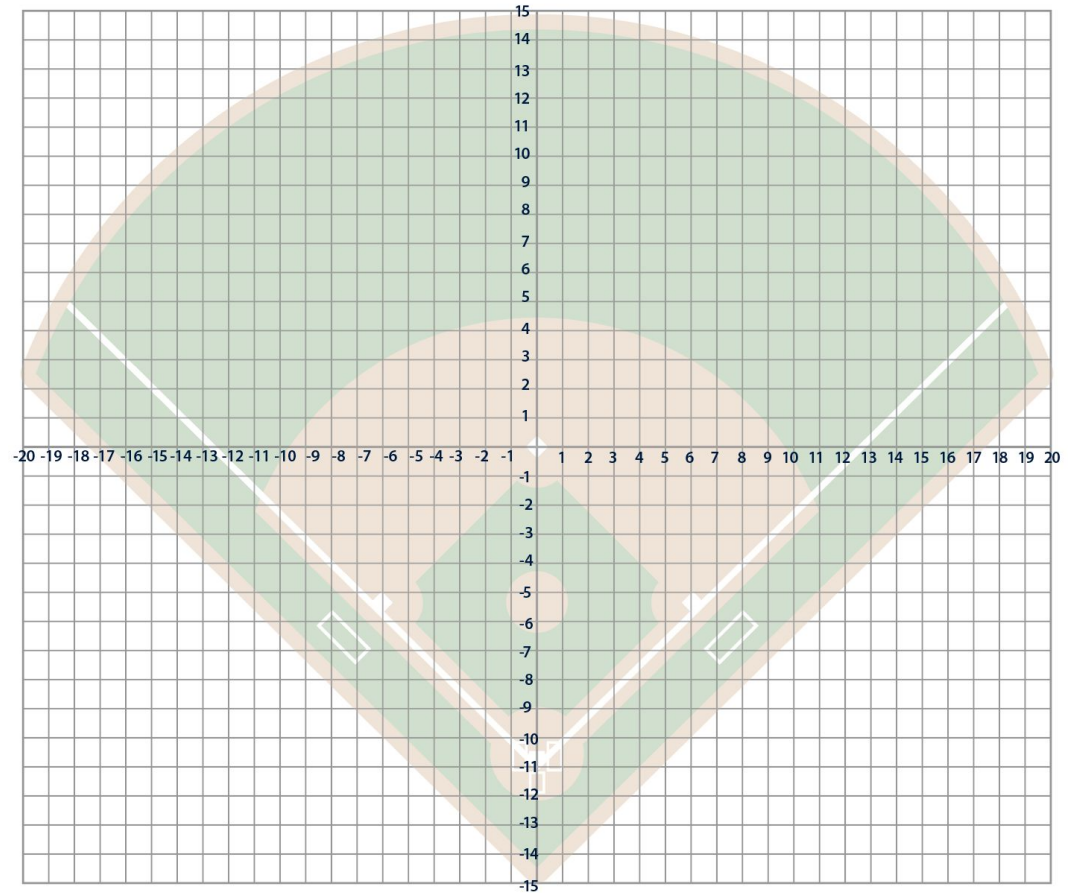


Explore

What makes a strong player at each position? Who needs to throw the farthest and fastest? Who needs to run the furthest? Use the [worksheet](#) as a guide.

Explain

Learn about a Coordinate Plane System and/or Pythagorean Theorem to better understand the strength of each position.



Elaborate

Using the [worksheet](#), demonstrate how far each position would need to throw if the ball was hit to them.

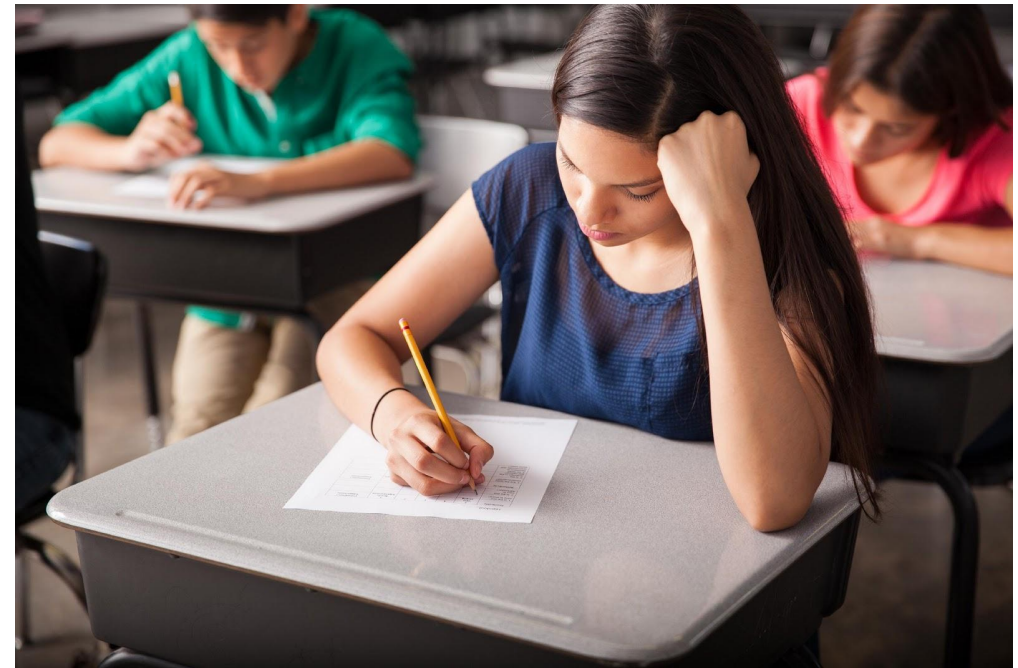
Evaluate

Determine how far a player would need to throw the ball to make an out, if their location changed to catch the ball. Use the [worksheet](#) as a guide.



What Did You Learn?

Have your students retake this lesson's assessment to effectively evaluate their comprehension by visiting: <https://stemsports.com/assessments/>. If you have limited digital capability, please email Info@STEMSports.com to access the Assessment & Key.



Extend

Challenge Yourself!

Test your skills on the field! Throw the ball a distance between each player to determine your position and skill set.



What is your Dream Job?

STEM Jobs in Sports

- Baseball Developer (IT) – Baseball Data and Development
- Softball: Assistant Coach
- Groundskeeper – Baseball & Softball Fields
- Assistant Athletic Director & JV Baseball Coach
- Parks & Recreation: Equipment Operator

Want to continue the education?

Visit us at

<https://stemsports.com/>

OR

Tag us @stemsportsusa



STEMSportsUSA



@STEMSportsUSA



STEMSportsUSA



STEMSportsUSA/pins



@STEMSportsUSA



STEM Sports



@STEMSportsUSA